

Figura 1. Fermentación láctica homofermentativa. (Adaptada de Larpent,

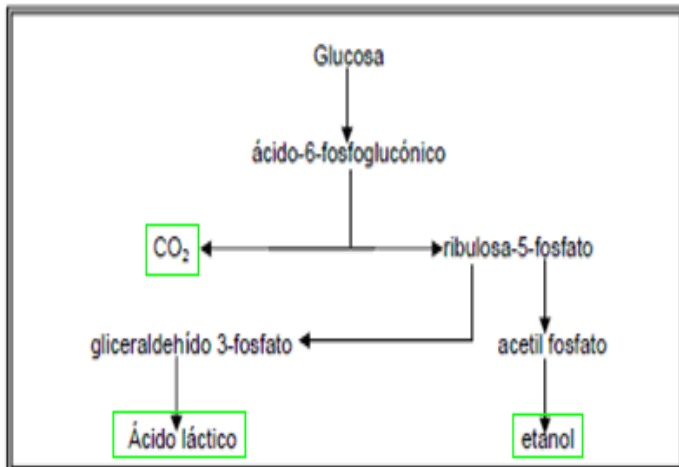
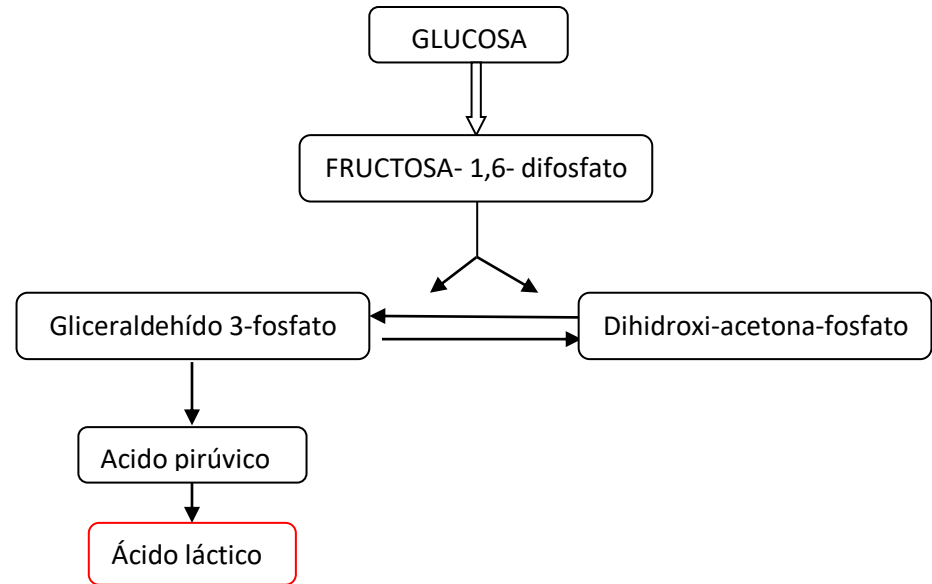
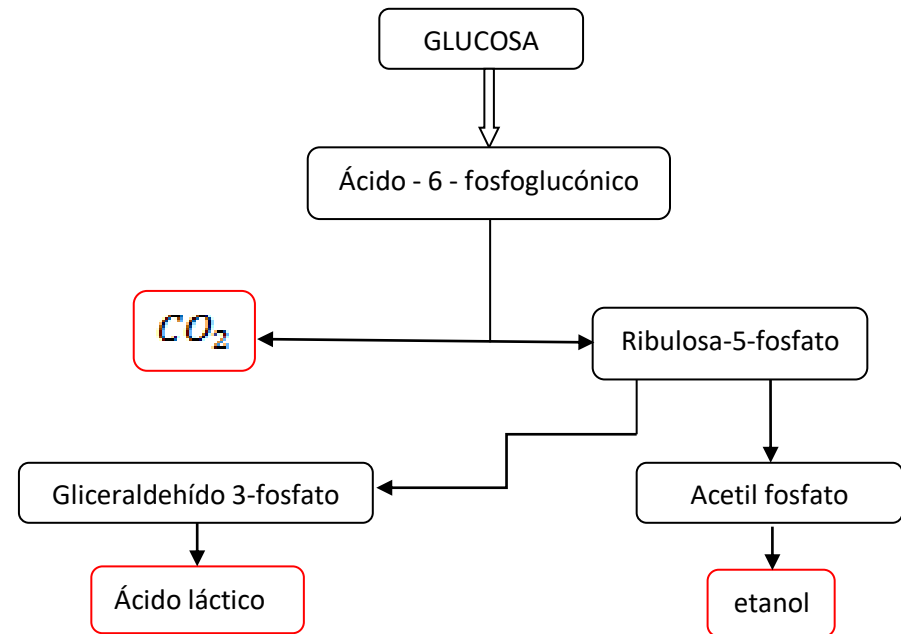
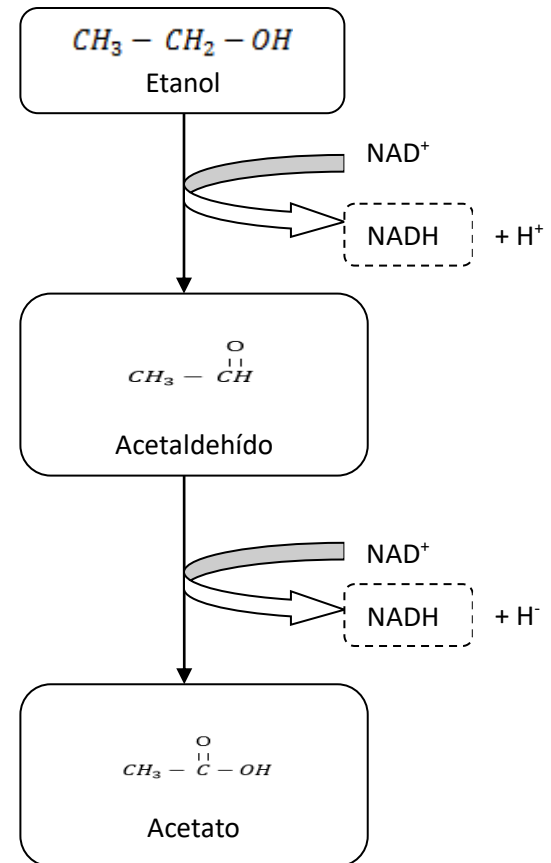
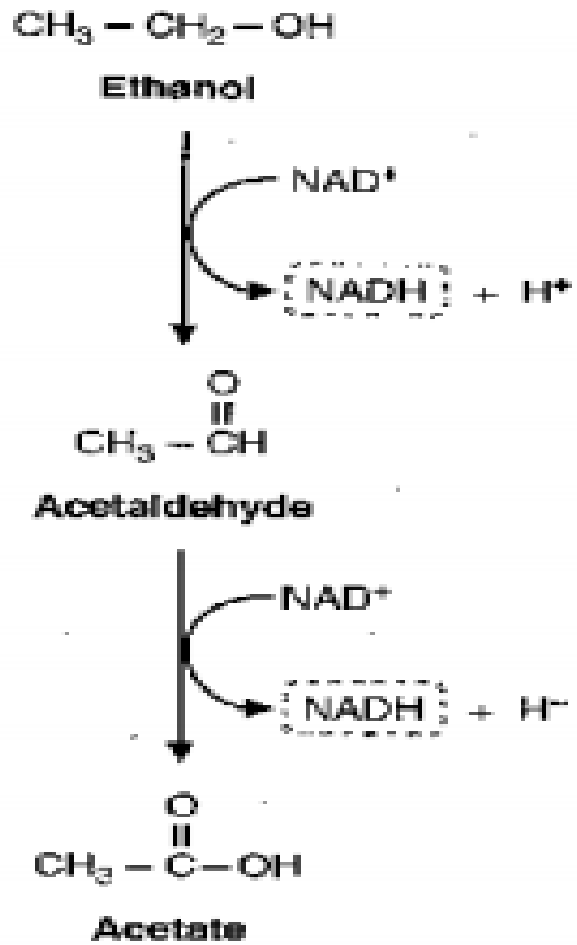
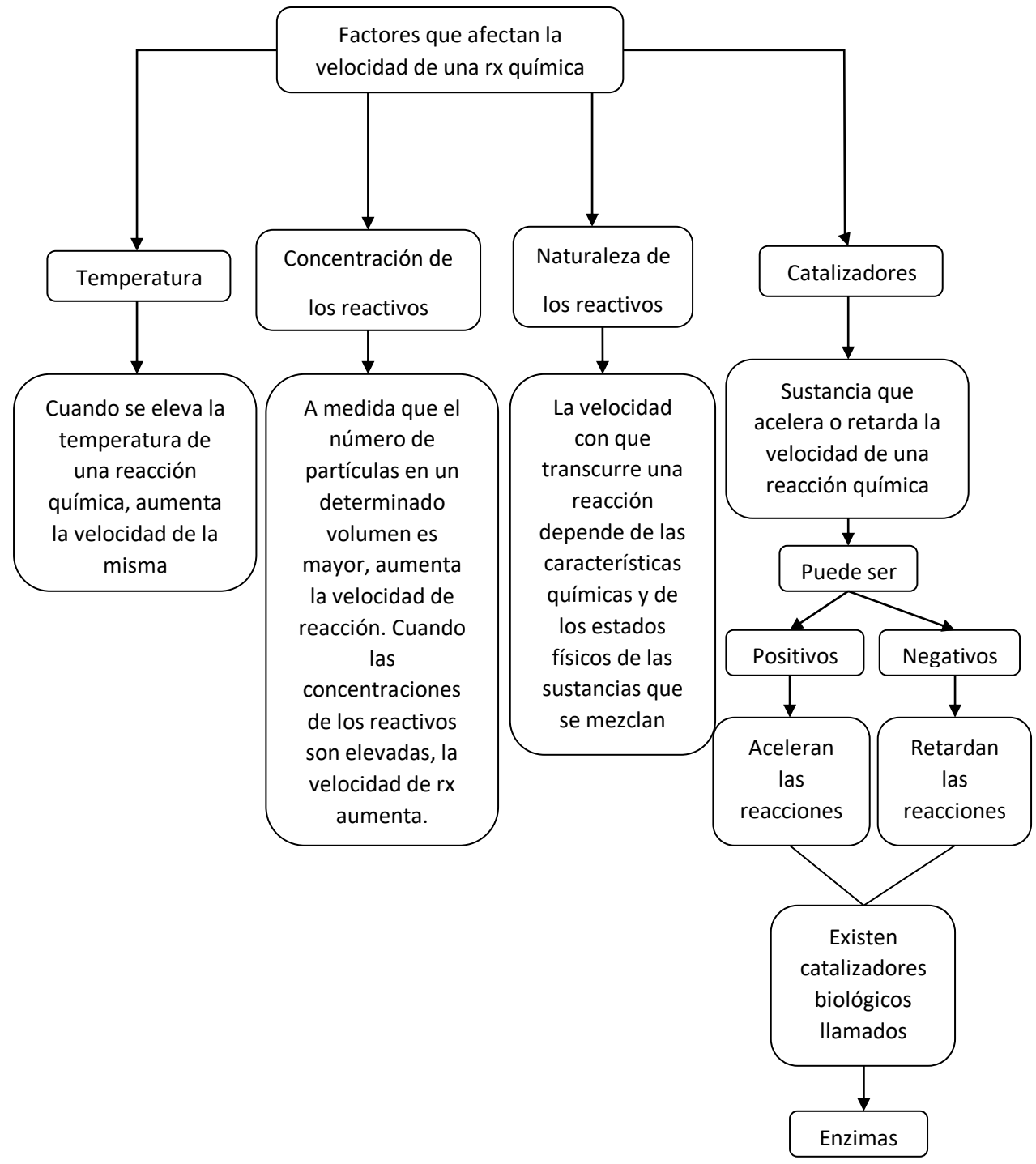


Figura 2. Fermentación láctica heterofermentativa. (Adaptada de Larpent,





**Glucosa + 2 NAD + 2ADP + 2H<sub>2</sub>PO<sub>4</sub> + 2 Ac. Pirúvico + NADH + 2H + 2ATP + 2H<sub>2</sub>O**



# Energy release from glucose

