

☀️👉🌸🌿🌿🌿🌿🌿🌿  
👉

☀️🌿🌿  
🌸🌿🌿🌿🌿

🌿🌿🌿🌿🌿

👉🌿🌿🌿🌿🌿  
🌿🌿🌿🌿🌿

🌿🌿🌿🌿🌿  
🌿🌿🌿

🌿🌿🌿🌿🌿  
🌿🌿🌿

🌿🌿🌿🌿  
🌿

🌿🌿🌿🌿  
🌿

🌿🌿🌿🌿🌿  
🌿🌿🌿  
🌿🌿

🌿🌿🌿🌿🌿  
🌿

🌿🌿🌿

🌿🌿🌿🌿

🌿🌿🌿🌿

🌿🌿🌿🌿  
🌿🌿🌿

🌿🌿🌿🌿  
🌿🌿

🌿🌿🌿🌿  
🌿

🌿🌿🌿🌿

🌿🌿🌿🌿  
🌿🌿🌿

🌿🌿🌿🌿  
🌿🌿

🌿🌿🌿🌿  
🌿

🌿🌿🌿🌿  
🌿🌿

🌿🌿🌿🌿  
🌿

🌿🌿🌿🌿  
🌿

🌿🌿🌿🌿  
🌿

🌿🌿🌿🌿  
🌿

🌿🌿🌿🌿  
🌿

🌿🌿🌿🌿  
🌿

☀️🌿🌿🌿  
🌿🌿🌿🌿

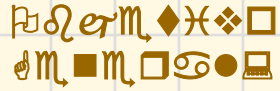
🌿🌿🌿🌿  
🌿🌿

🌿🌿🌿🌿  
🌿🌿🌿

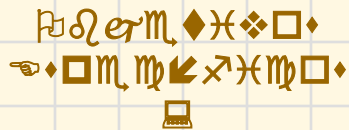
🌿🌿🌿🌿  
🌿🌿🌿

🌿🌿🌿🌿  
🌿🌿🌿

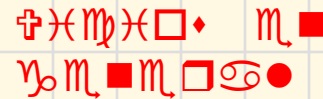
🌿🌿🌿🌿  
🌿🌿

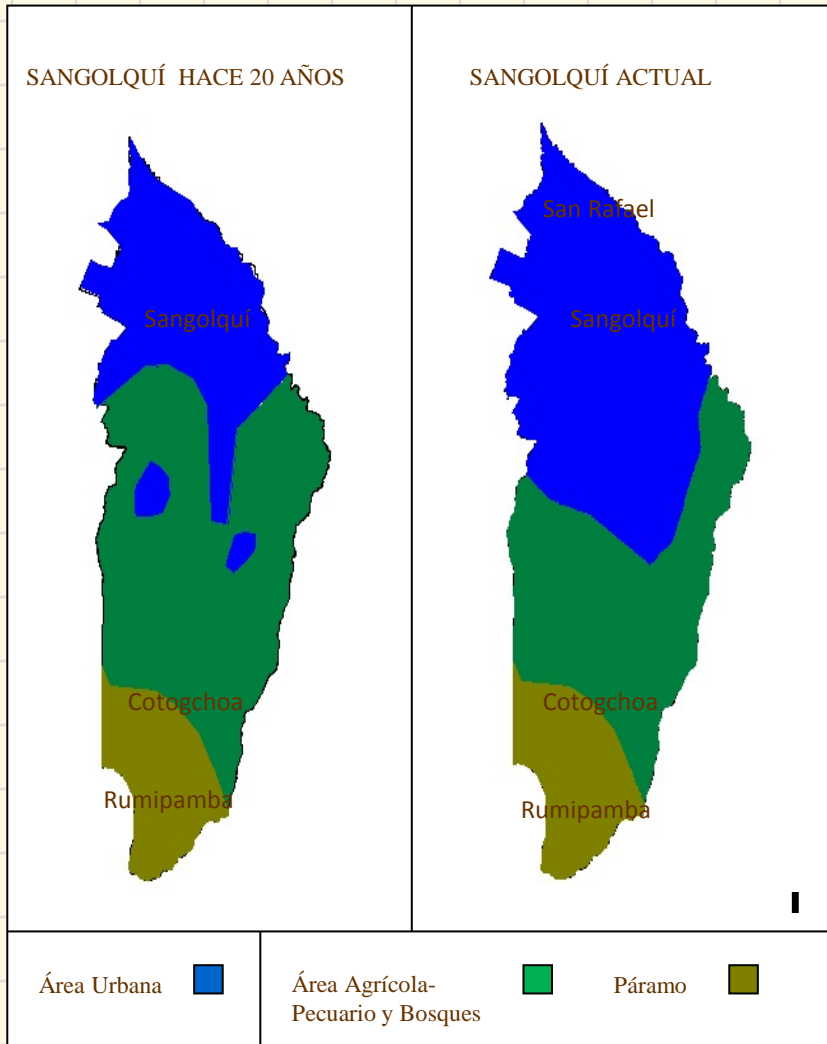


Diseñar una unidad espacial destinada a la recreación cultura y deporte



1. Vincular y relacionar la historia y costumbres del Cantón al proyecto urbano- arquitectónico.
2. Consolidar la zona que está en formación y crecimiento como una nueva franja de actividades deportivas, recreativas y culturales.
3. Rescatar la vegetación propia de la zona.
4. Generar espacios de ayuda comunitaria para los habitantes del Cantón Rumiñahui.
5. Desarrollar actividades compatibles en el área de trabajo con los jóvenes estudiantes del sector.





ᄏᆞᄃᆞᄁᆞᄂᆞᄃᆞᄄᆞ

ᄏᆞᄃᆞᄁᆞᄂᆞᄃᆞᄄᆞᄅᆞᄆᆞᄇᆞᄈᆞ  
ᄉᆞᄊᆞᄋᆞᄌᆞᄍᆞᄎᆞᄏᆞᄐᆞᄑᆞᄒᆞᄓᆞᄔᆞᄕᆞᄔᆞᄕᆞᄕᆞᄋᆞᄋᆞ



ᄏᆞᄃᆞᄁᆞᄂᆞᄃᆞᄄᆞᄅᆞᄆᆞᄇᆞᄈᆞ  
ᄉᆞᄊᆞᄋᆞᄌᆞᄍᆞᄎᆞᄏᆞᄐᆞᄑᆞᄒᆞᄓᆞᄔᆞᄕᆞᄔᆞᄕᆞᄋᆞᄋᆞ



ᄏᆞᄃᆞᄁᆞᄂᆞᄃᆞᄄᆞᄅᆞᄆᆞᄇᆞᄈᆞᄉᆞᄊᆞᄋᆞᄌᆞᄍᆞᄎᆞᄏᆞᄐᆞᄑᆞᄒᆞᄓᆞᄔᆞᄕᆞᄔᆞᄕᆞᄋᆞᄋᆞ

ᄏᆞᄃᆞᄁᆞᄂᆞᄃᆞᄄᆞᄅᆞᄆᆞᄇᆞᄈᆞᄉᆞᄊᆞᄋᆞᄌᆞᄍᆞᄎᆞᄏᆞᄐᆞᄑᆞᄒᆞᄓᆞᄔᆞᄕᆞᄔᆞᄕᆞᄋᆞᄋᆞ  
ᄉᆞᄊᆞᄋᆞᄌᆞᄍᆞᄎᆞᄏᆞᄐᆞᄑᆞᄒᆞᄓᆞᄔᆞᄕᆞᄔᆞᄕᆞᄋᆞᄋᆞ



ᄏᆞᄃᆞᄁᆞᄂᆞᄃᆞᄄᆞᄅᆞᄆᆞᄇᆞᄈᆞᄉᆞᄊᆞᄋᆞᄌᆞᄍᆞᄎᆞᄏᆞᄐᆞᄑᆞᄒᆞᄓᆞᄔᆞᄕᆞᄔᆞᄕᆞᄋᆞᄋᆞ  
ᄉᆞᄊᆞᄋᆞᄌᆞᄍᆞᄎᆞᄏᆞᄐᆞᄑᆞᄒᆞᄓᆞᄔᆞᄕᆞᄔᆞᄕᆞᄋᆞᄋᆞ



☞☞☞☞☞☞☞☞ ☞☞☞☞☞☞☞☞

☞◆♣◆◻○✕♣◆◆◻◆

☞●☞☞☞☞☞☞☞◆

☞♣●♣◻◻◻☞☞☞☞☞◆ ☞◆◆◆✕  
☞◻◻○✕



☞✕◆◻ ◻♣ ☞◻☞◆◻☞☞☞◆

●✕◆◻◻◻○◻♣◆

☞◻☞☞☞☞◻ ☺◆◻◆ ◻♣  
●◻●✕◆◻◆

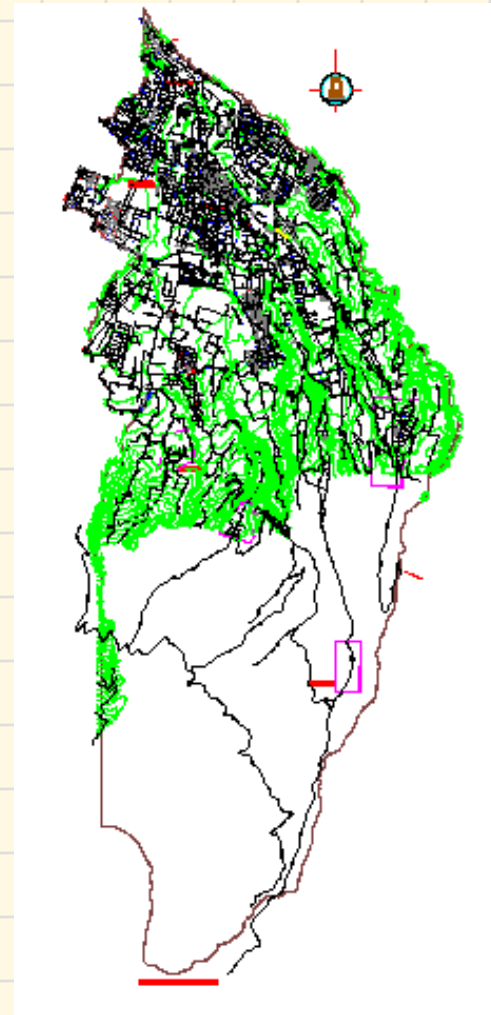
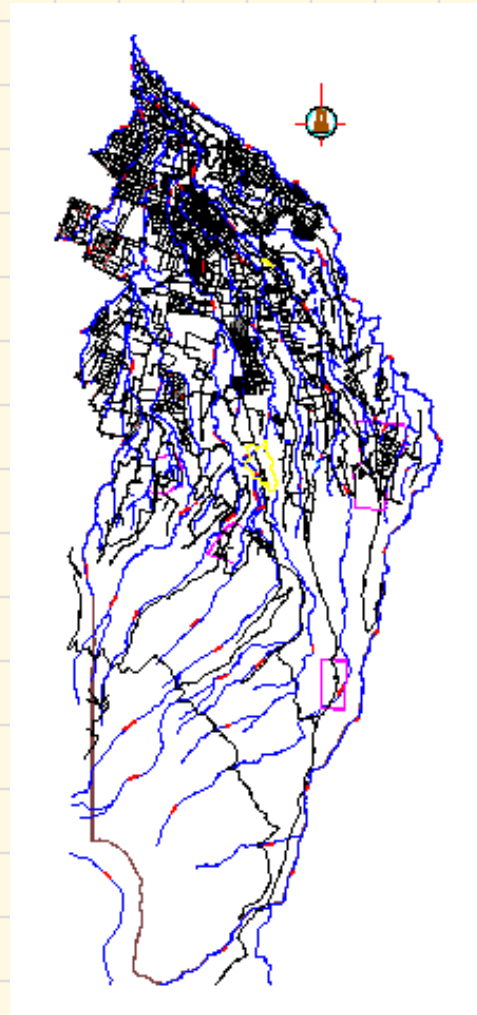
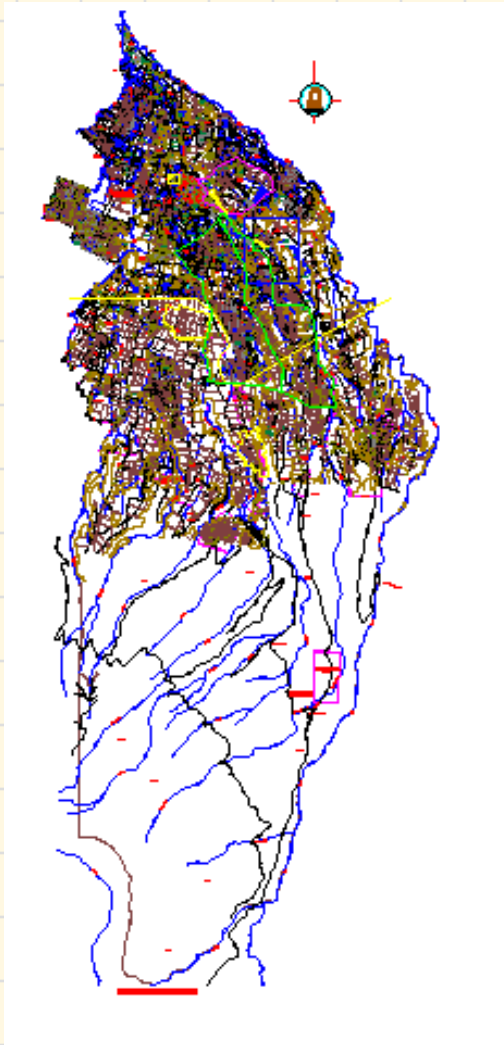


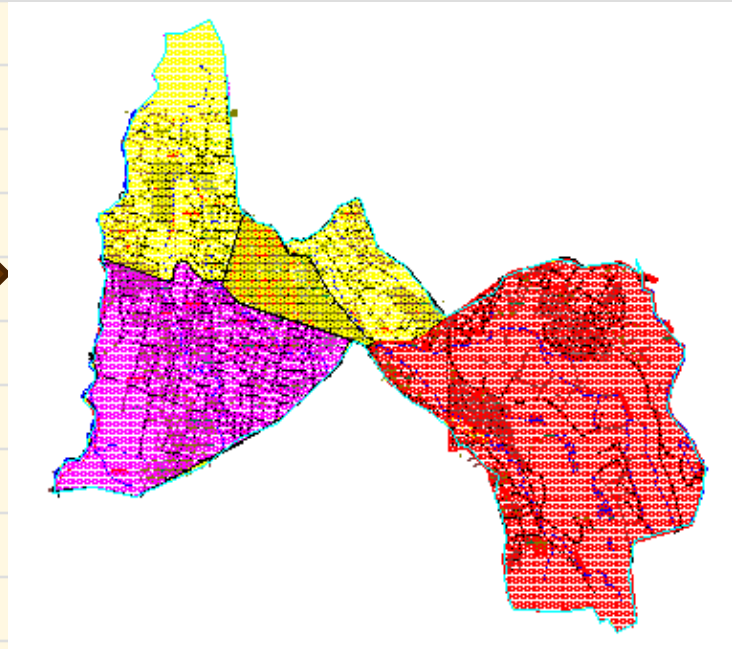
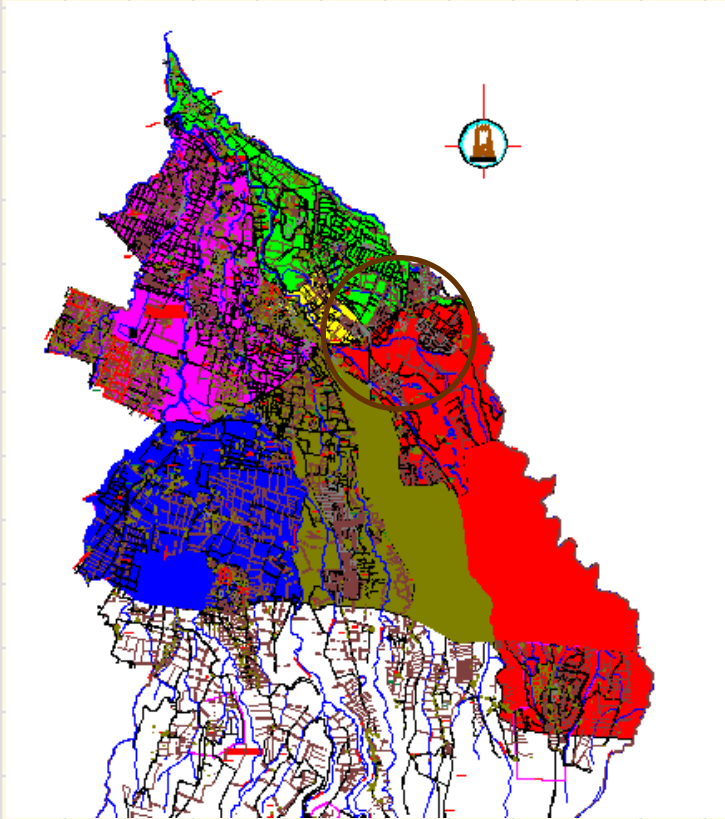
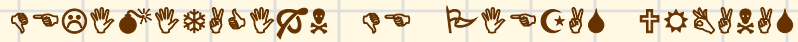


1. 地形图  
 2. 水系图  
 3. 居民点图

4. 交通图  
 5. 土地利用现状图  
 6. 植被图

7. 土壤图  
 8. 地质图  
 9. 气象图





☀️👉☀️☀️👉☠️💧



💧👉☹️✝️✌️  
✌️☹️👉☀️👉

💧👉☠️☠️  
☠️👉☀️👉💧



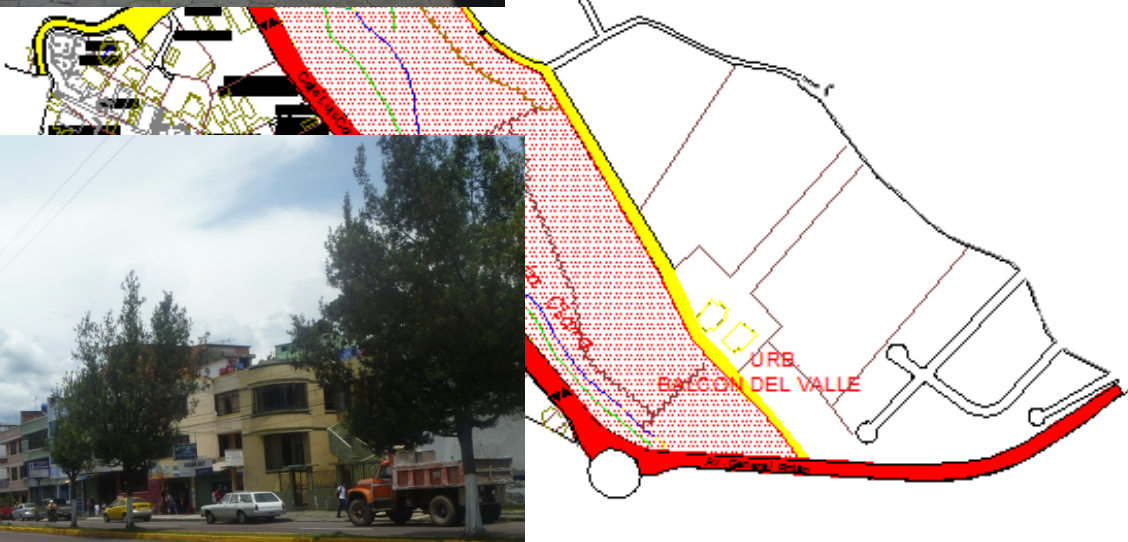
☠️👉☠️☀️👉  
👉☹️👉☀️👉





- 
- 
- 
- 
- 
- 
- 





⦿⦿⦿⦿⦿⦿ ⦿⦿⦿⦿⦿⦿

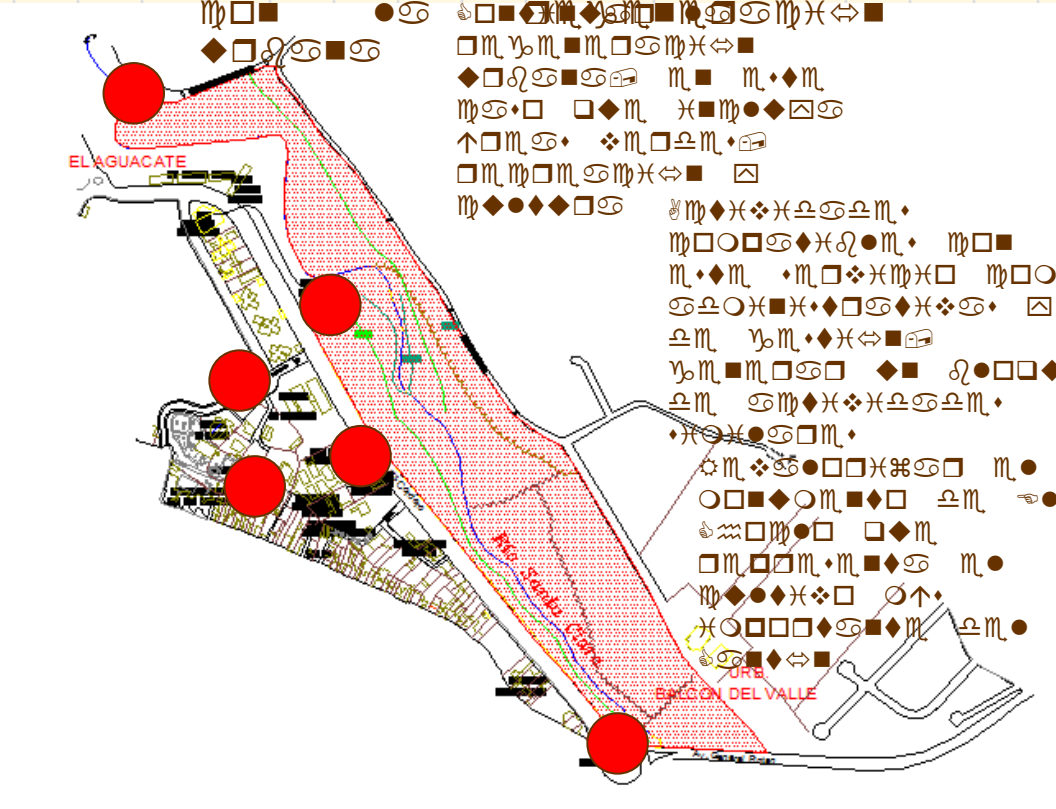
⦿◆□□□□  
 ▣□◆●⋈⊕⊚  
 □⦿▣◆□□  
 ⊕  
 ●⊚▣□●□◆⦿



⦿◆□□□□ ▣▣  
 □□□▣▣● ⊕  
 □▣▣▣▣□⊚▣⦿  
 ◆□⊚⊚⊚ ⊚  
 ▣□◆●⋈⊕⊚▣⦿

①

⦿▣▣▣⦿⊚ ●⊚  
 ▣□▣▣⦿⦿  
 □▣⊚◆□□⊚● ▣▣◆□▣  
 ▣● ▣●◆⊚⦿⦿⦿ ⊚  
 ▣● □□⦿⦿▣▣◆  
 ⦿▣▣▣□⊚◆⦿⊚  
 ⦿⦿⦿⊚ ⊕  
 □▣●□⦿□⦿  
 □◆●○⦿▣ ◆□⊚⦿□  
 ⊚● ▣▣◆□□ ⊕  
 ●⊚ ▣▣◆⦿⊚  
 ▣□▣▣●◆⦿⦿⦿⦿  
 ⊕▣●□□⦿▣⦿⦿⦿  
 ⦿▣▣▣⦿⦿⦿◆⦿  
 ⦿▣▣▣⦿⦿⦿⦿  
 ⦿▣▣▣▣⦿⦿⦿  
 ⦿▣▣▣⦿⦿⦿⦿  
 ⦿▣▣▣▣⦿⦿⦿  
 ⦿▣▣▣▣⦿⦿⦿  
 ⦿▣▣▣▣⦿⦿⦿  
 ⦿▣▣▣▣⦿⦿⦿  
 ⦿▣▣▣▣⦿⦿⦿  
 ⦿▣▣▣▣⦿⦿⦿  
 ⦿▣▣▣▣⦿⦿⦿  
 ⦿▣▣▣▣⦿⦿⦿  
 ⦿▣▣▣▣⦿⦿⦿  
 ⦿▣▣▣▣⦿⦿⦿  
 ⦿▣▣▣▣⦿⦿⦿



⦿▣▣▣▣▣▣  
 □▣▣▣▣▣▣  
 ◆□⊚⊚⊚ ▣▣ ▣◆▣  
 ▣⊚●□▣ ▣▣◆⦿  
 ⊕□▣⊚● ▣▣□⦿  
 □▣▣▣▣▣▣  
 ▣◆◆◆◆□⊚

⦿▣▣▣▣⦿⦿⦿  
 □□◆□▣◆□ ⊕  
 ⦿▣▣▣▣□  
 □▣□□▣▣◆⦿ ▣  
 ▣◆◆◆◆□ ⊕  
 ⦿□□□⦿⦿▣▣  
 ⊕◆◆◆◆  
 ⦿▣▣▣▣⦿⦿⦿ ▣  
 □□◆□▣◆□ ⊕  
 ⦿▣▣▣▣□  
 □▣□□▣▣◆⦿ ▣  
 ▣◆◆◆◆□ ⊕  
 ⦿□□□⦿⦿▣▣  
 ⊕◆◆◆◆



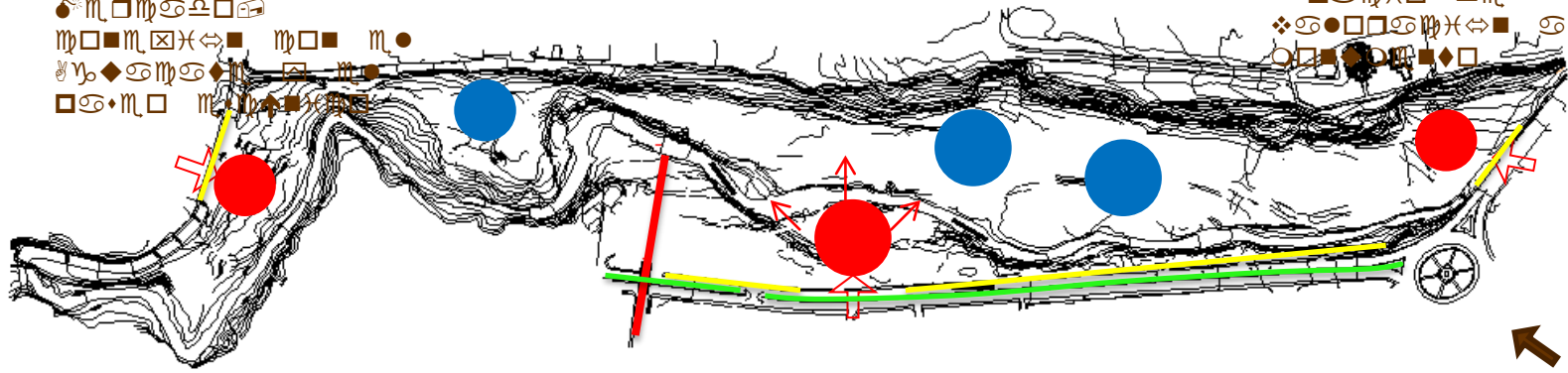
Hand-drawn symbols and icons at the top of the page, including a sun, a cross, a water drop, a flower, and a person.

Hand-drawn symbols and icons in the middle of the page, including a person, a water drop, a flower, and a person.



Hand-drawn symbols and icons on the left side of the map, including a person, a water drop, a flower, and a person.

Hand-drawn symbols and icons on the right side of the map, including a person, a water drop, a flower, and a person.



Hand-drawn symbols and icons in the bottom middle section, including a person, a water drop, a flower, and a person.

Hand-drawn symbols and icons in the bottom right section, including a person, a water drop, a flower, and a person.



✚ 🖐 🖐 🌸 🖐 🖐 ✂  
☠

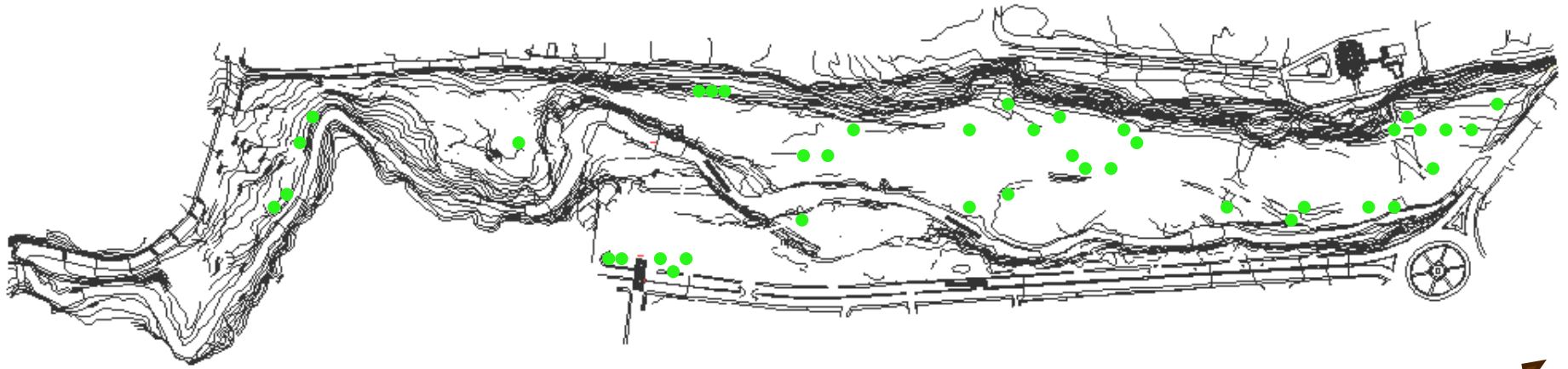


🖐 ✂ 🌸 ✂ 🌿





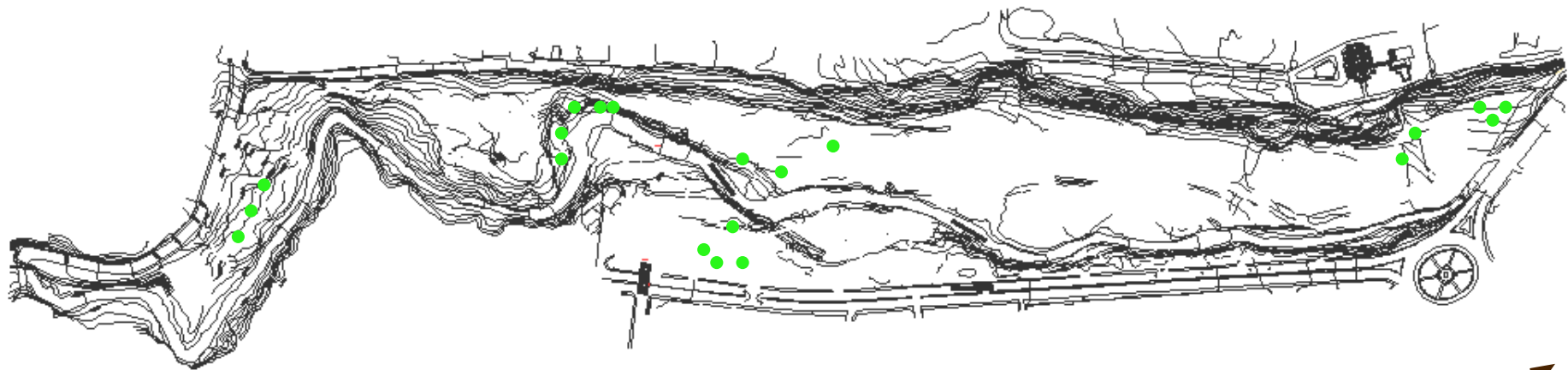
✚ → → ❄️ 🙌 🙌 ✂️  
☠️



☺️ 🙌 🙌 ❄️ 🙌 🙌



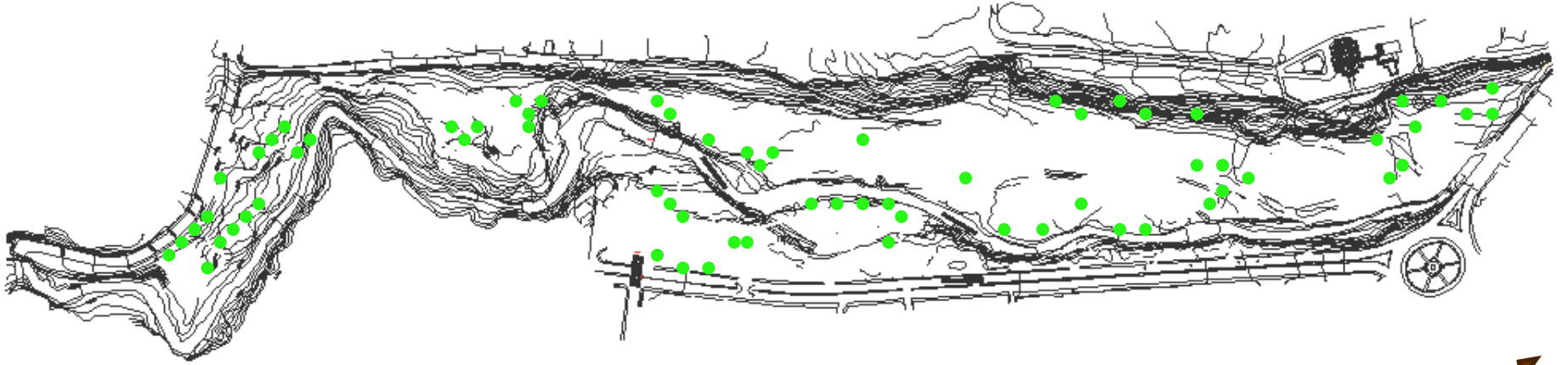
✦ 🖐️ 🖐️ ❄️ 🖐️ 🖐️ 🖐️ 🖐️  
☠️



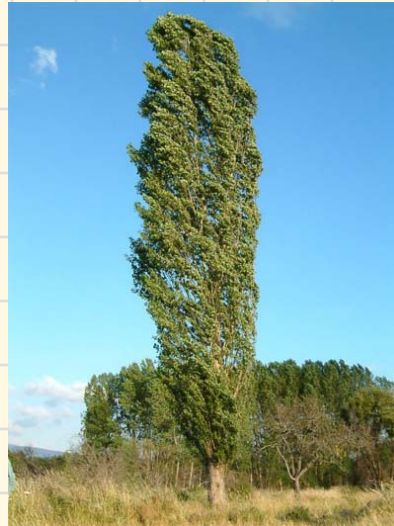
🖐️ 🖐️ 🖐️ 🖐️  
🖐️ 🖐️ 🖐️ 🖐️



⊕ 🖐️ 🖐️ ❄️ 🖐️ 🖐️ 🖐️ ⚡  
☠️



⊙ ⊙ ⊙ ● ☃️



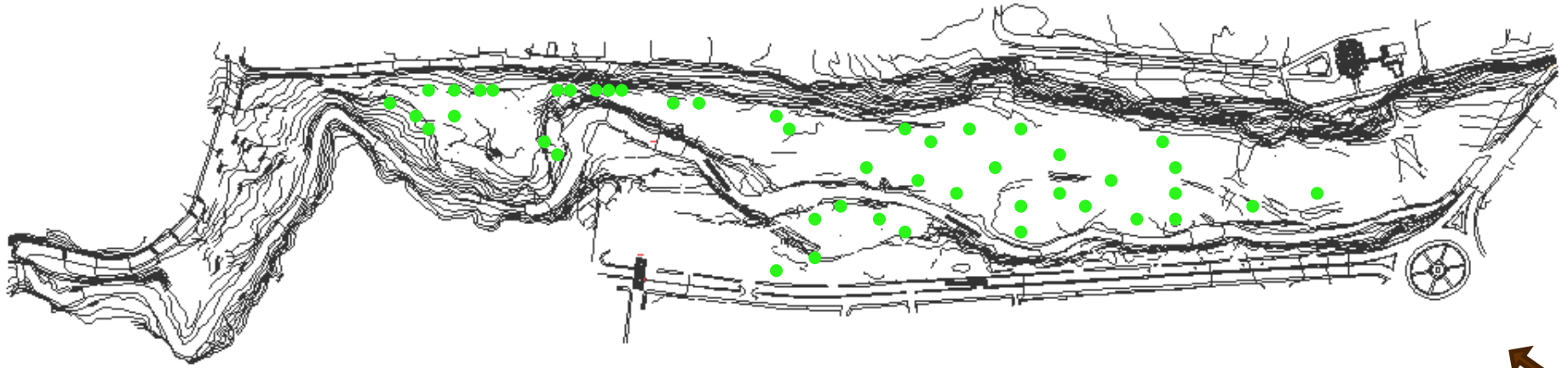
✦ ↷ ↶ ❄️ 🐾 🖐️ 🤲 ⚔️  
☠️



↷ ↶ ❄️ 🐾 🖐️ 🤲 ⚔️



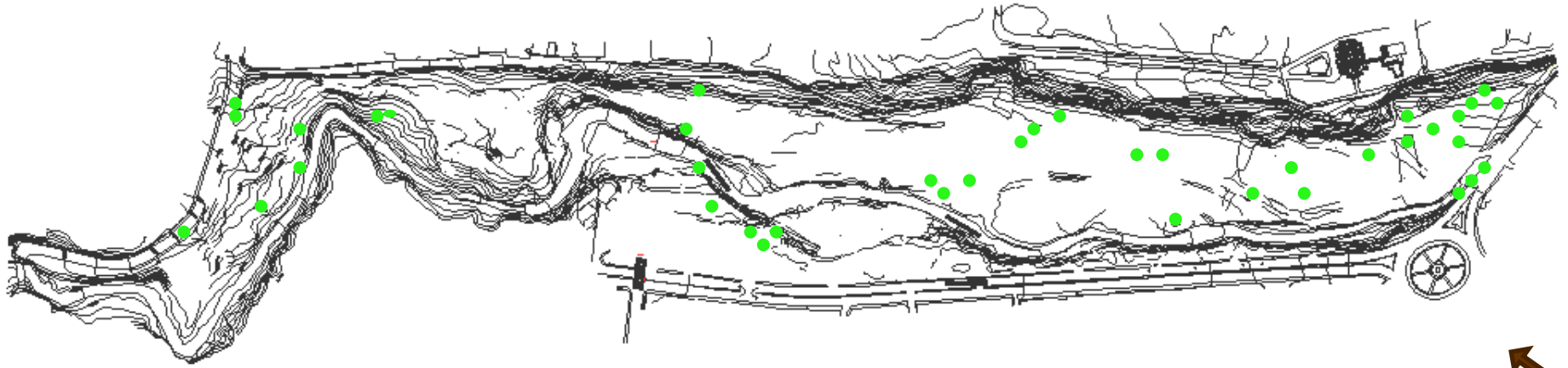
† → → ❄️ 🖐️ 🖐️  
☠️



☠️ + ● 🖐️ 🖐️  
● 🖐️ + †



† ☞ ☞ ☞ ☞ ☞ ☞ ☞ ☞  
☠



☞ ☞ ☞ ☞ ☞ ☞ ☞ ☞



🌸🌸🌸🌸🌸



🌸🌸🌸🌸🌸🌸🌸



🌸🌸🌸🌸🌸🌸



🌸🌸🌸🌸🌸 🌸🌸🌸🌸  
🌸🌸🌸



🌸🌸🌸🌸🌸🌸



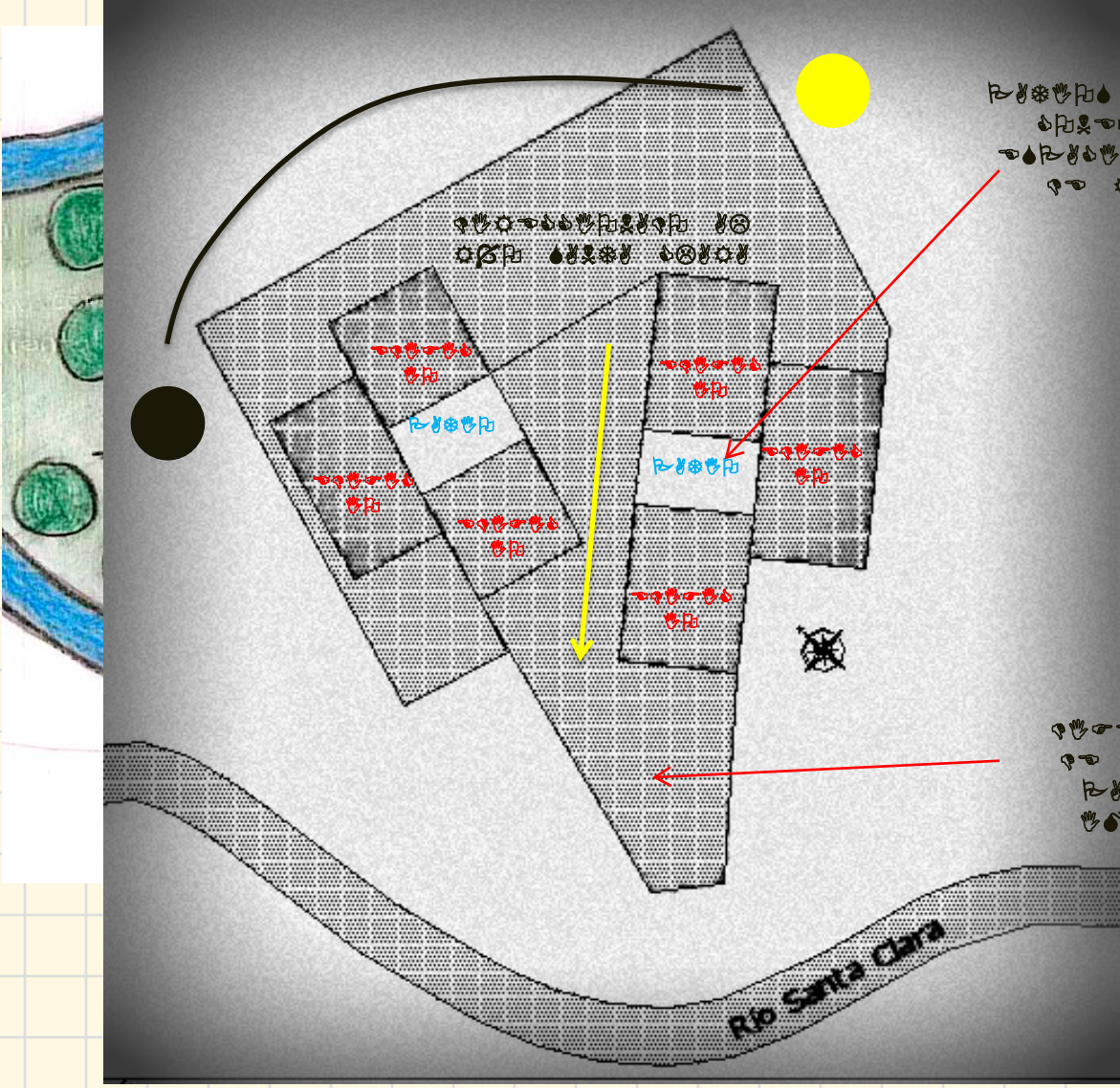
🌸🌸🌸🌸🌸 🌸🌸🌸🌸









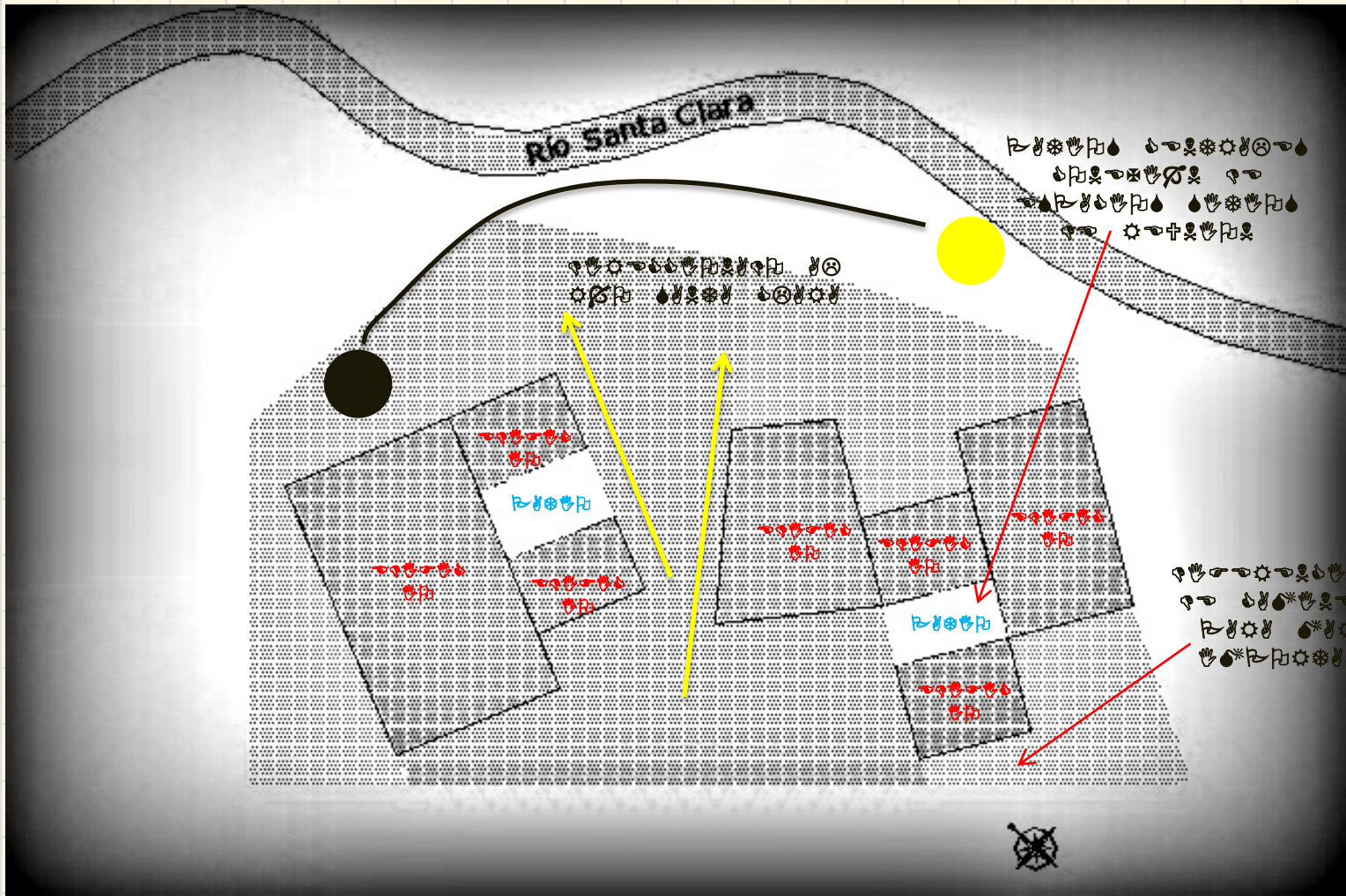


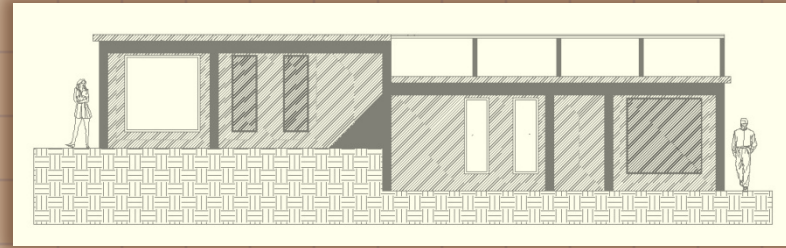
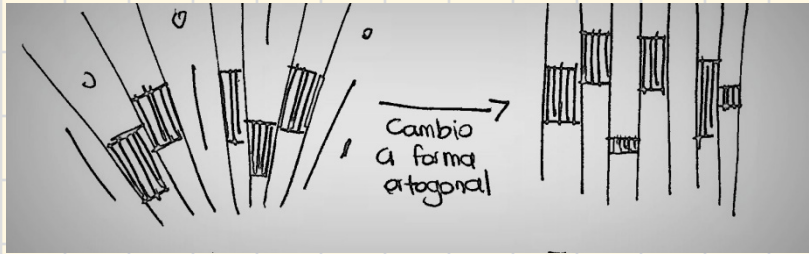
0 1 2 3 4 5 6 7 8 9 10  
 11 12 13 14 15 16 17 18 19 20  
 21 22 23 24 25 26 27 28 29 30  
 31 32 33 34 35 36 37 38 39 40  
 41 42 43 44 45 46 47 48 49 50  
 51 52 53 54 55 56 57 58 59 60  
 61 62 63 64 65 66 67 68 69 70  
 71 72 73 74 75 76 77 78 79 80  
 81 82 83 84 85 86 87 88 89 90  
 91 92 93 94 95 96 97 98 99 100

1 2 3 4 5 6 7 8 9 10  
 11 12 13 14 15 16 17 18 19 20  
 21 22 23 24 25 26 27 28 29 30  
 31 32 33 34 35 36 37 38 39 40  
 41 42 43 44 45 46 47 48 49 50  
 51 52 53 54 55 56 57 58 59 60  
 61 62 63 64 65 66 67 68 69 70  
 71 72 73 74 75 76 77 78 79 80  
 81 82 83 84 85 86 87 88 89 90  
 91 92 93 94 95 96 97 98 99 100

1 2 3 4 5 6 7 8 9 10  
 11 12 13 14 15 16 17 18 19 20  
 21 22 23 24 25 26 27 28 29 30  
 31 32 33 34 35 36 37 38 39 40  
 41 42 43 44 45 46 47 48 49 50  
 51 52 53 54 55 56 57 58 59 60  
 61 62 63 64 65 66 67 68 69 70  
 71 72 73 74 75 76 77 78 79 80  
 81 82 83 84 85 86 87 88 89 90  
 91 92 93 94 95 96 97 98 99 100

Rio Santa Clara



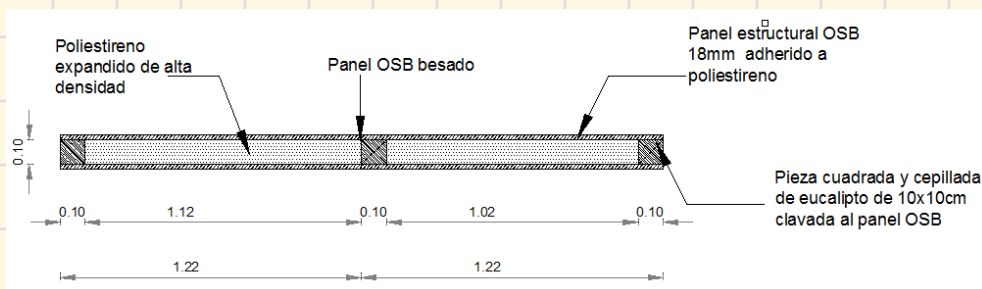




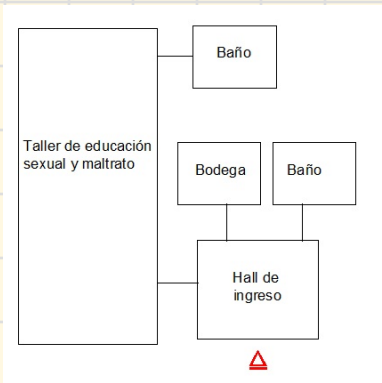
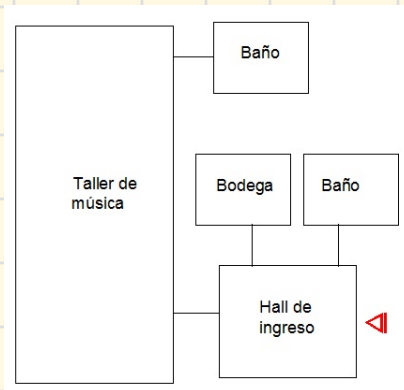
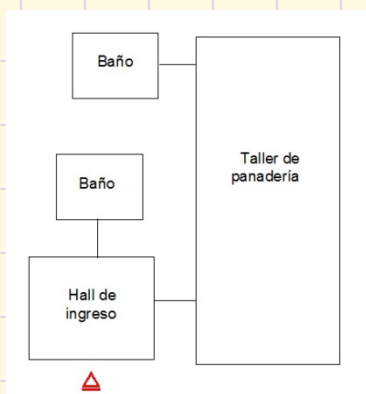
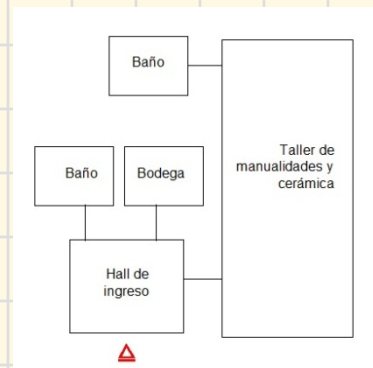
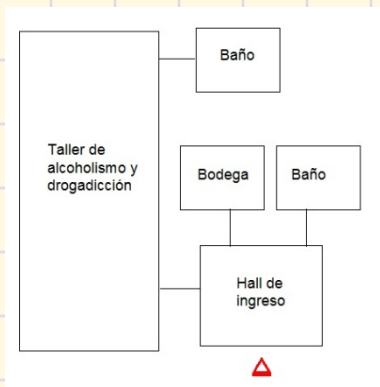
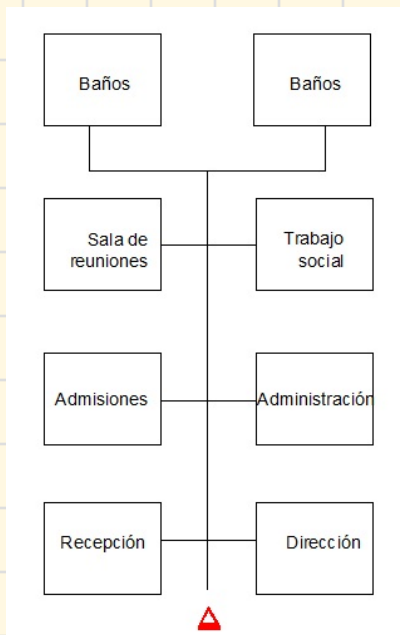
- Las edificaciones se trabajarán en madera para guardar un sentido ecológico y un ambiente cálido.
- Columnas en madera (chanul) compuesta, con luces de 2.65 m de acuerdo a una modulación.
- El proyecto se trabajará con paneles estructurales OSB vistos en un terminado barnizado color natural y color café.

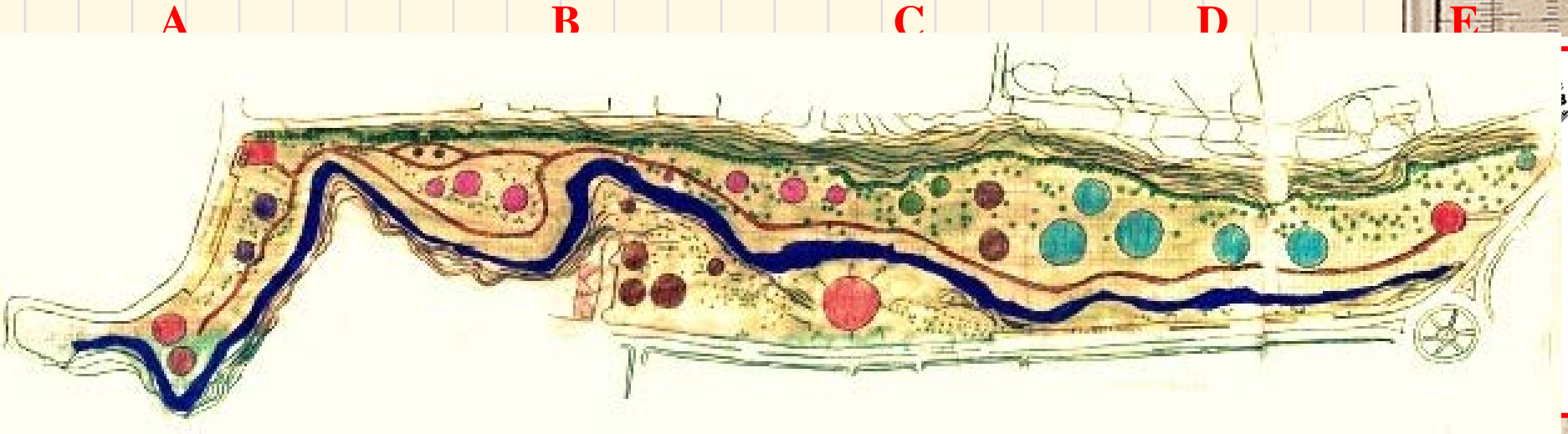
### PANEL OSB

Es un panel estructural, económico decorativo, ecológico producido a través de tiras orientadas de pino, madera de resforestamiento.



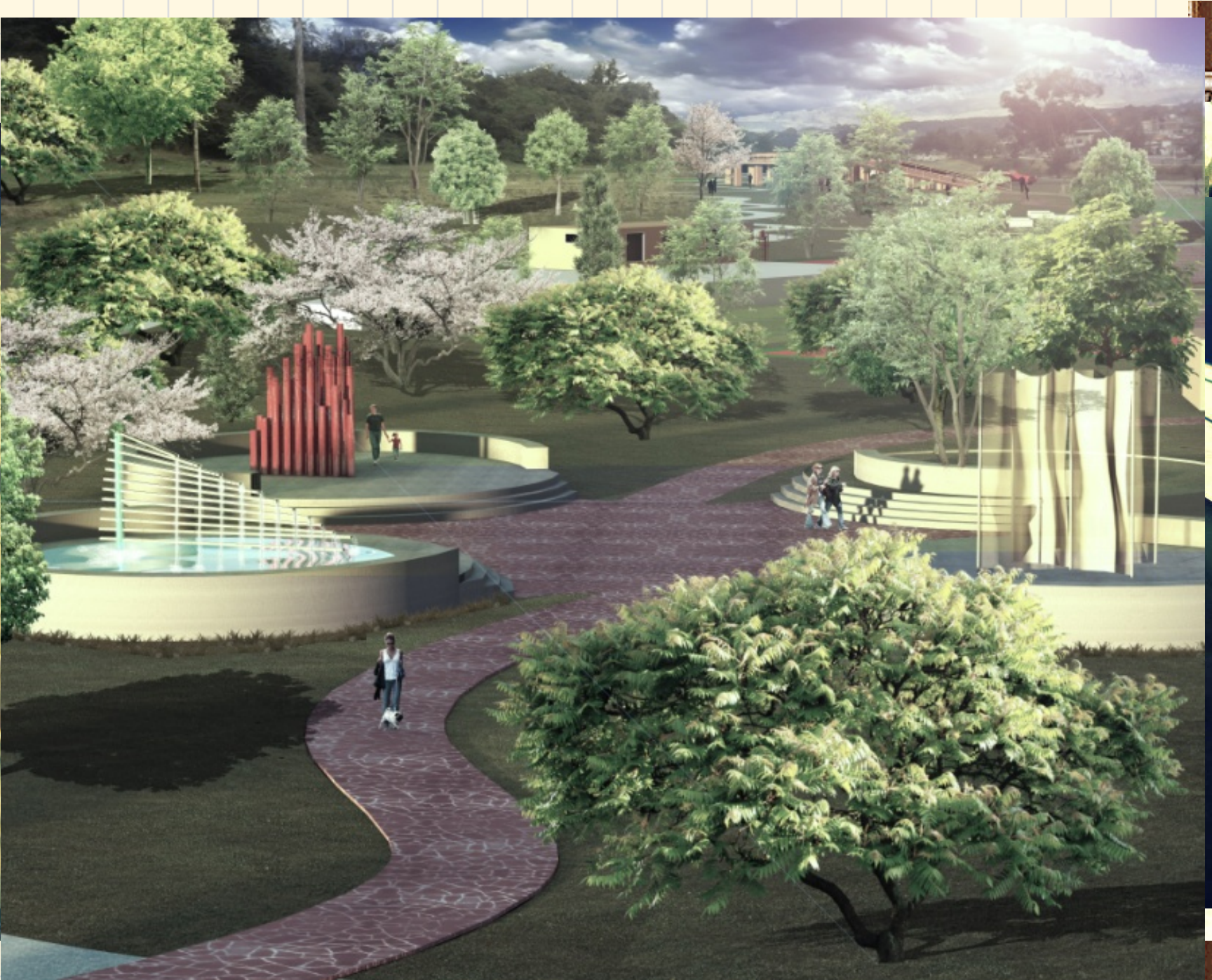


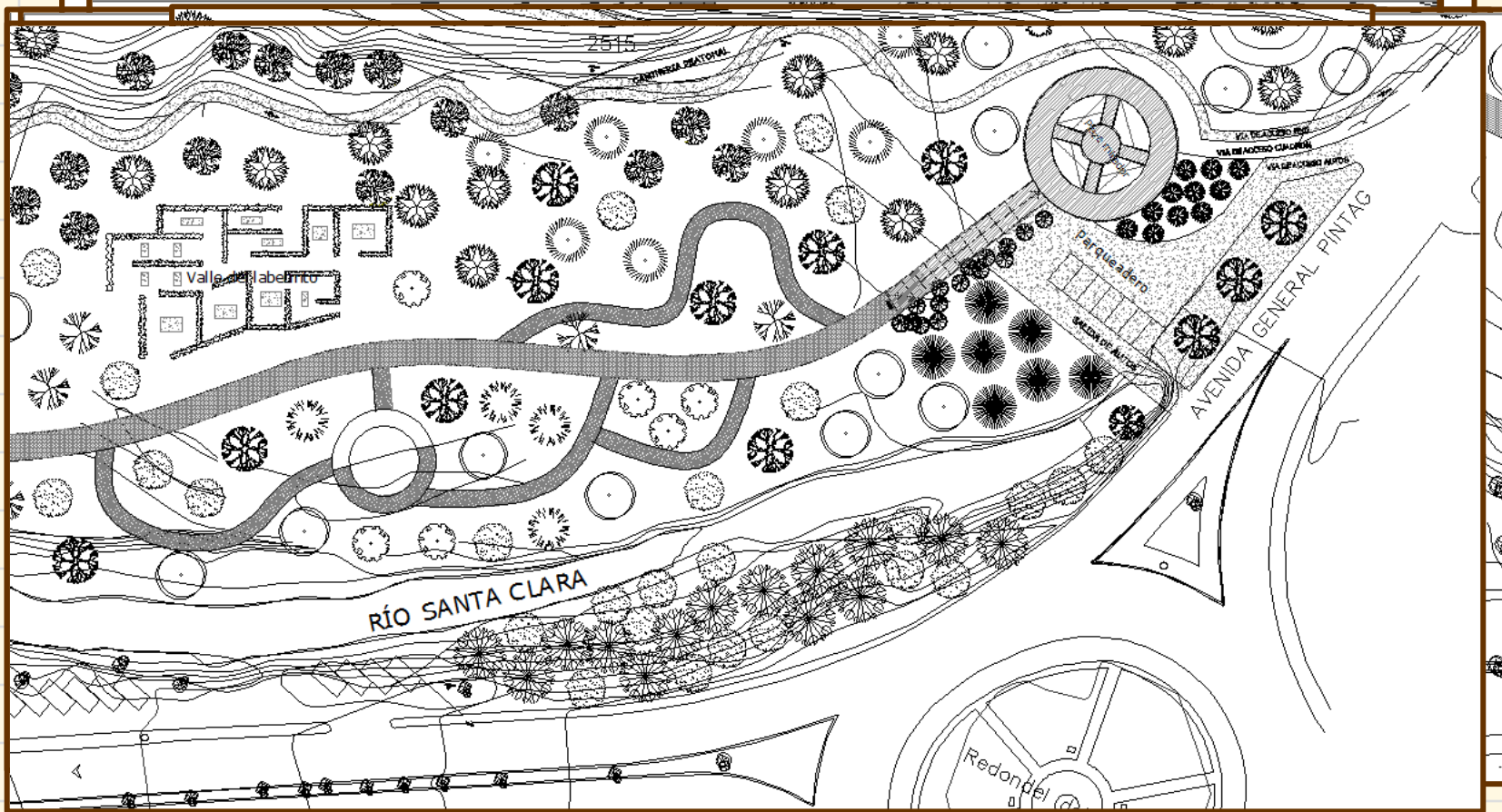
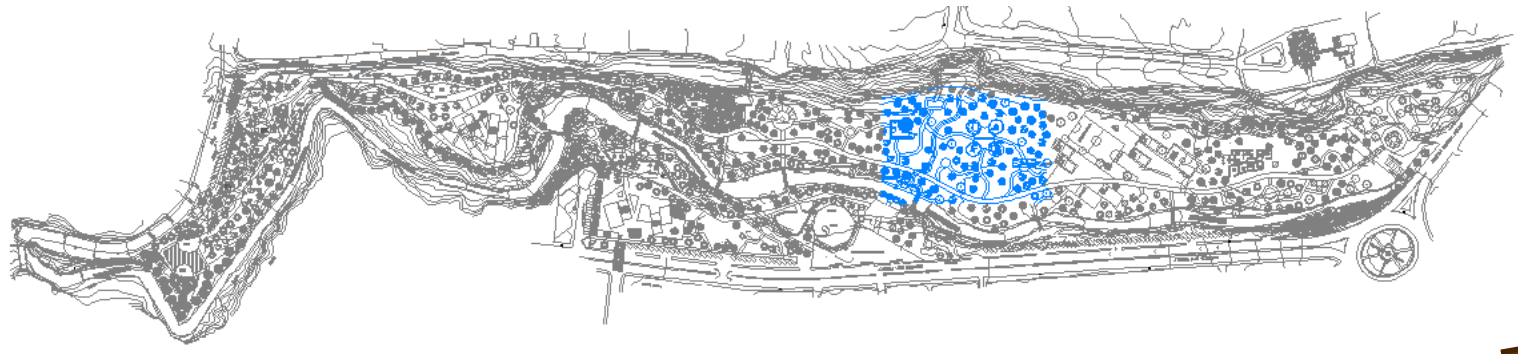


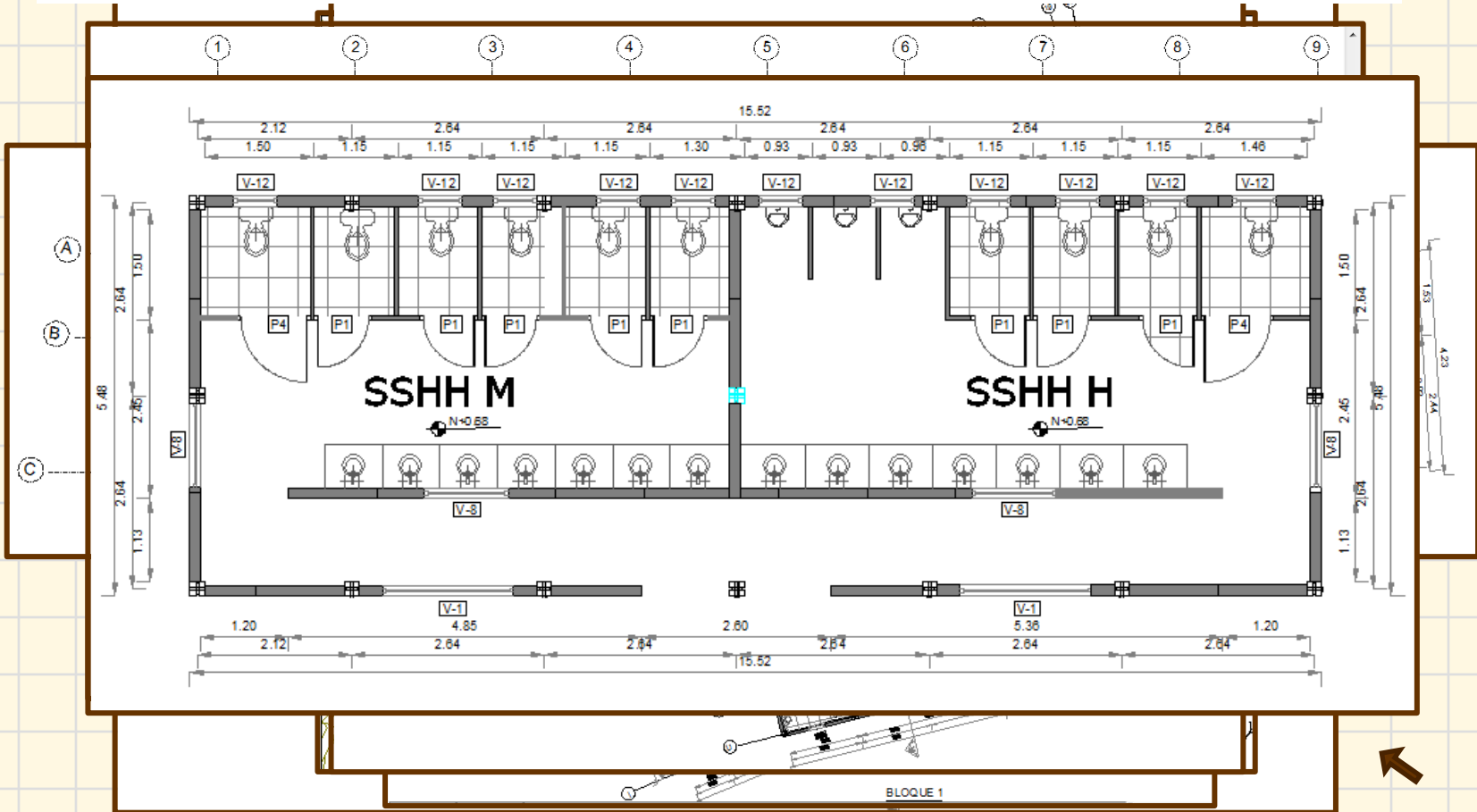


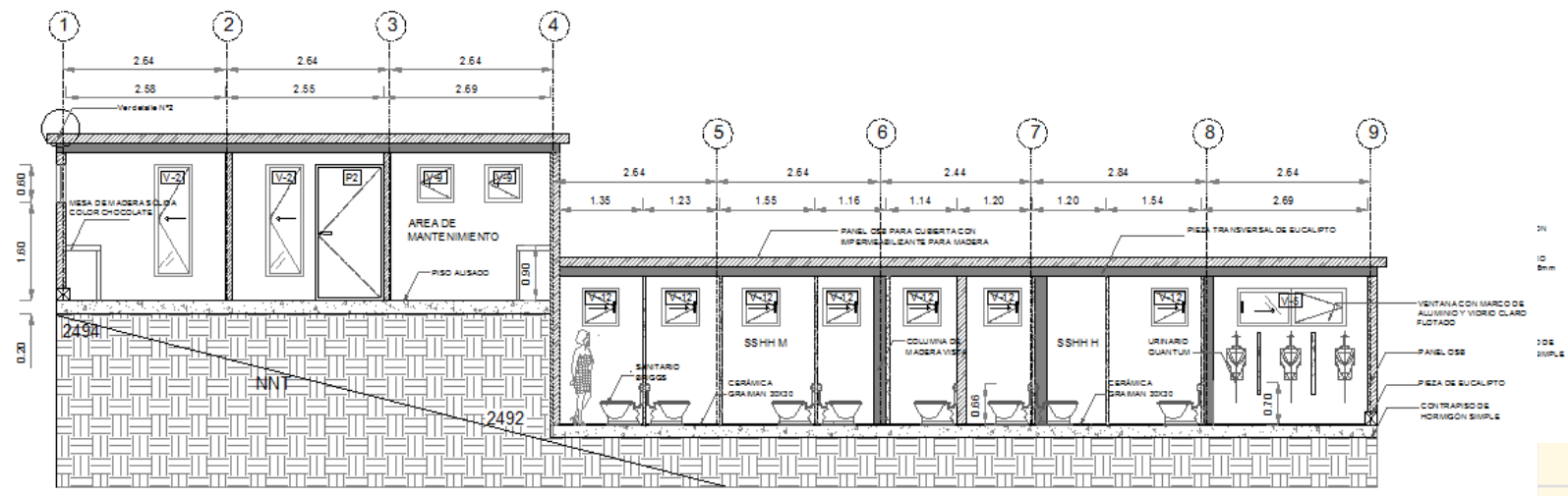
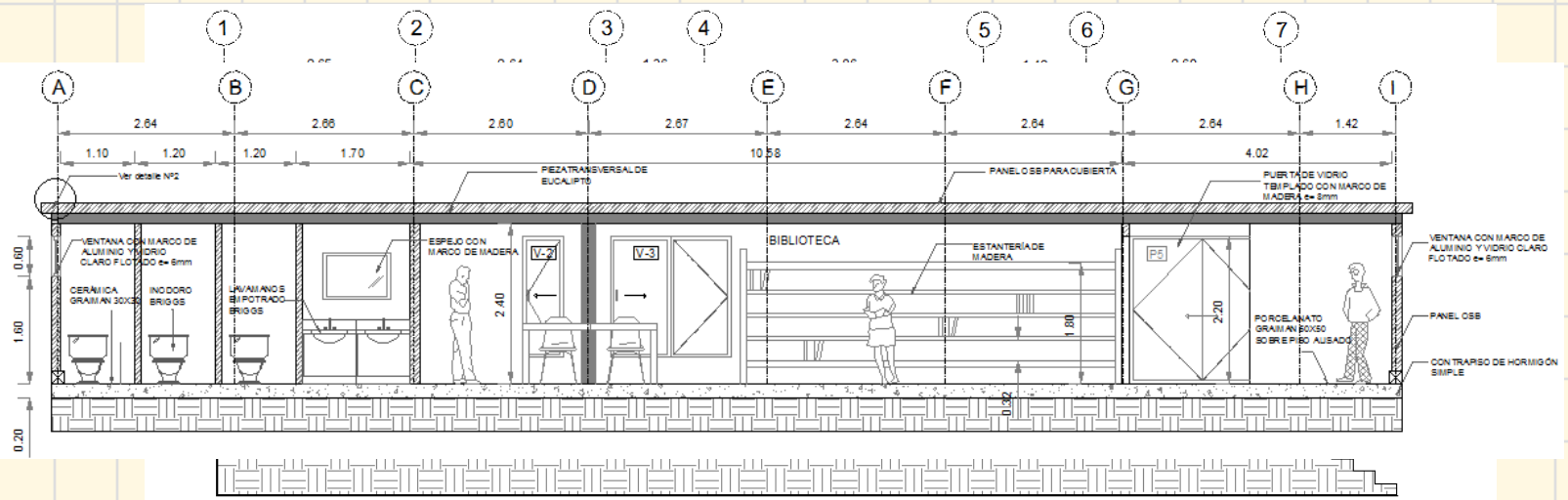
- INGRESOS
- PARQUEADEROS
- JUEGOS INFANTILES
- EDIFICACIONES
- COMERCIO
- ÁREA DE REFLEXIÓN
- TRADICIONES
- PLAZA DE LOS ELEMENTOS
- ÁREA DEPORTIVA
- CASCADAS

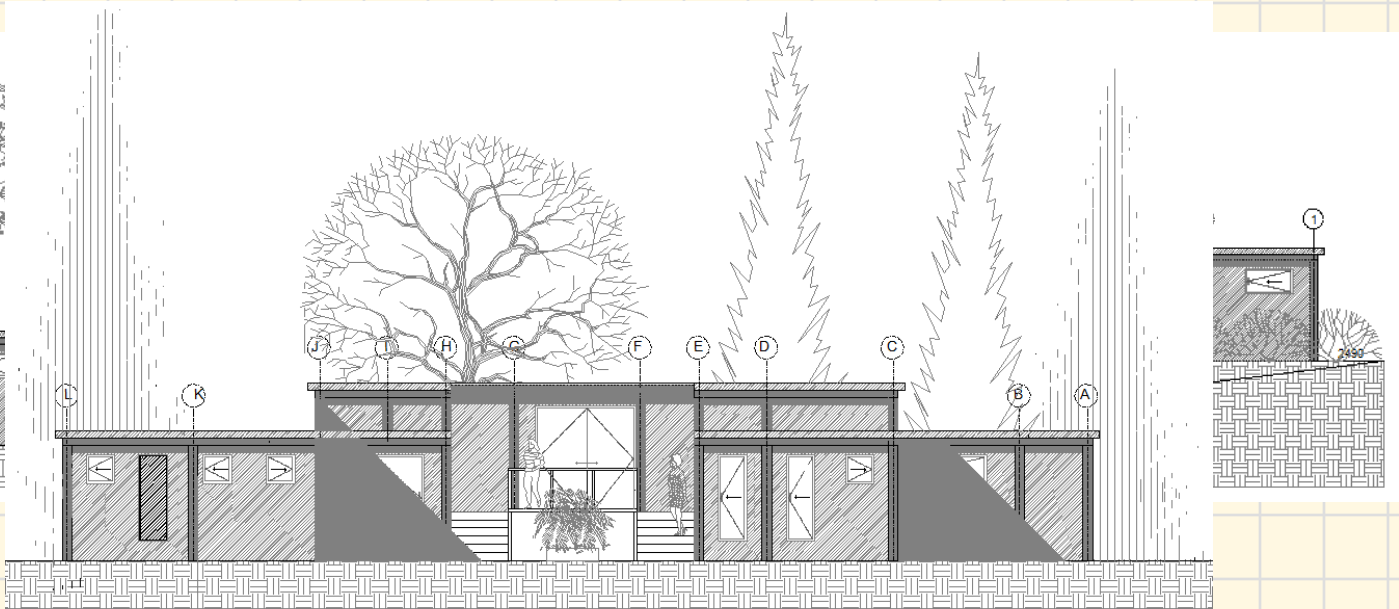
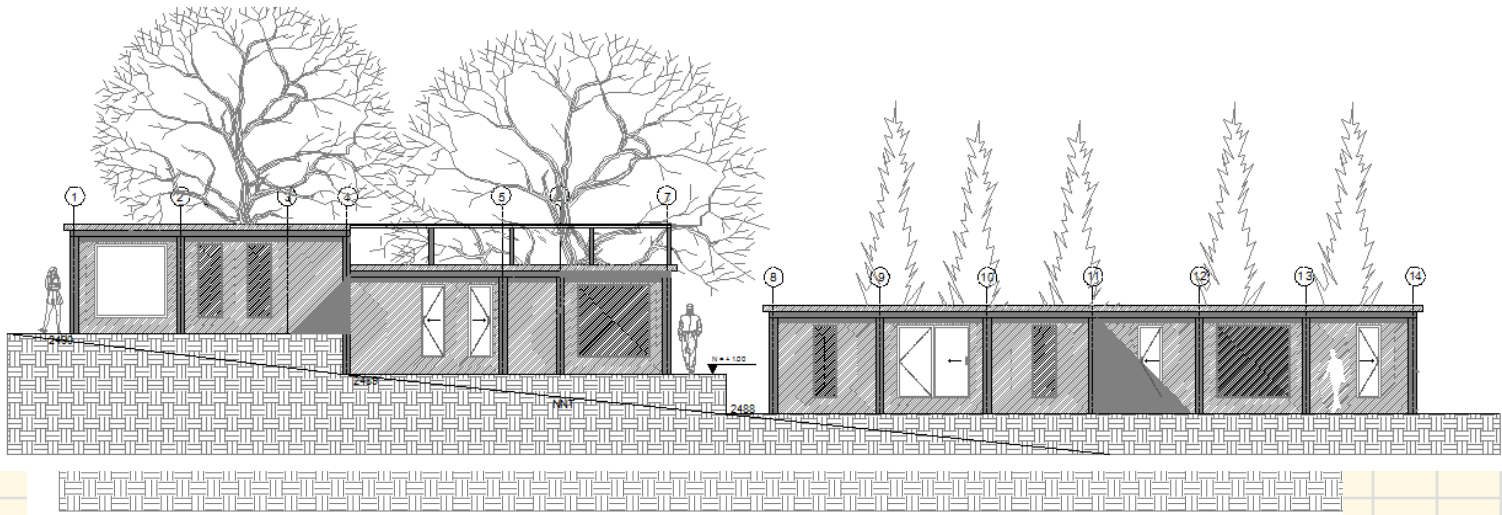












**GRACIAS POR SU  
ATENCIÓN**

